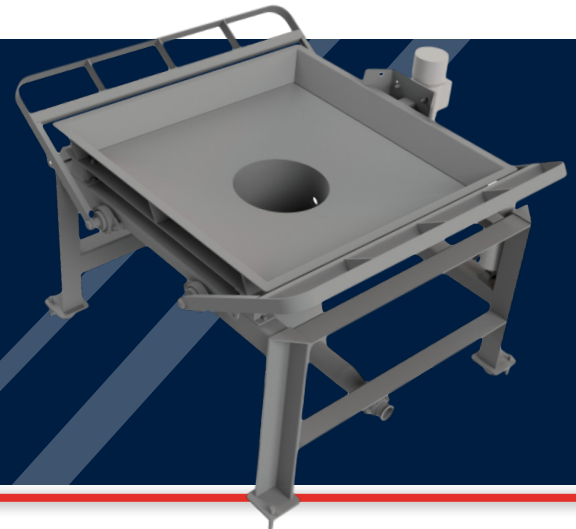


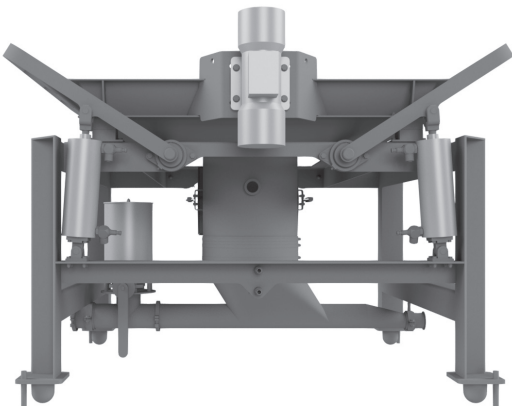
The RELCO® **Bulk Bag Unloader** is designed for USDA sanitary applications and includes a sanitary receptor tube with dual manual pneumatic cylinders to operate the spout clamp. Easily customized to suit your bulk unloading needs and difficult flowing materials.



The **Bulk Bag Unloader** consists of a robust lower module including a sanitary receptor tube and vibration pan. The unloader has a 2,500-pound capacity and accepts a wide variety of bags sizes. Bag spout seal is achieved through dual-over-center latches to minimize dust. An enclosure within the receptor tube contains a dust port, limiting dusting during bag changeovers. The vibrating bag pan and optional bag massagers ensure positive powder discharge for difficult, less free-flowing products. An optional upper module can be added to the base module to incorporate a hoist and monorail system for ease of bag presentation.

### FEATURES & BENEFITS

- Modular Stainless Steel Frame features continuous welds for sanitary construction
- Upper and lower frames can be orientated independently to meet specific equipment layouts
- Stainless Steel Vibration Bag Pan mounted to tandem vibration isolators promotes product flow via a vibration motor
- Bag Pan incorporates 4-inch-high spill control sideboards to help contain powder loss/spillage
- Dual-Bag Massagers operated via 4-inch pneumatic air cylinders promote positive power discharge for less free flowing products, includes sequential timer and solenoid valve housed within a NEMA 4X enclosure
- Manually operated iris valve allows for easy partial bag tie-offs during changeovers
- Stainless steel sanitary receptor tube provides a sanitary connection to the bag liner via dual manually-operated, air-assisted cylinders which control the telescoping bag clamp plate. Dust collection port removes product collected in the outlet dust collection ring during bag exchanges



### OPTIONS

- Stainless Steel Bag Lift Adapter allows a simple point of connection between the hoist and bulk bag; the bag lift adapter evenly spreads the weight of the bulk bag during the process
- Single Hoist Module including high-speed, low-profile motorized two-ton metric Hoist and Trolley System with hanging, four-button pendant and I-Beam
- Dual Hoist module including high-speed, low-profile motorized two-ton metric Hoist and Trolley System with hanging, four-button pendant and I-Beam. Dual hoist allows partially loading the next bulk bag while the existing bulk bag is being unloaded for faster bulk bag changes
- Hoist and Trolley I-Beam fabricated of carbon steel and then painted to allow the operator to attach the bulk bag to the equipment and hoist the bag into position
- Loss-in-weight package includes load cells, controls package and outlet shutoff valve
- Combine the loss-in-weight package with a volumetric feeder for a precise loss-in-weight batching system
- Custom-designed Applications

